

Burnaby Examiner

BC's Fastest Growing Suburban Newspaper

No. 32

3849 East Hastings Phone 298-3020

Burnaby, B.C., Thursday August 12th, 1965

10¢ per copy 35¢ per month

Eigh

TORONTO-DOMINION BANK



EQUIPPED EXAMINER news cruiser puts in its first at news fronts covering developments following armed robbery of the Loughheed and Willingdon Bank on Friday afternoon.

Editor Dave Mitchell makes details. Robbery was Burnaby's first bank holdup for 18 months; previous Burnaby attack, at same branch, netted \$5,000 in January of 1964. Dick MacLean photo

Second Robbery In 18 Months

Mounties Lay Dragnet In \$2,800 Bank Holdup

Burnaby Mounties are sifting through dozens of leads this week, as they narrow the search for the brazen stick-up artist who walked out of the Toronto-Dominion Bank at Loughheed and Willingdon \$2,800 richer than when he entered.

Dozens of Mounties converged on the corner, Burnaby's cross-roads, moments after the silent alarm had been sounded in RCMP headquarters while the thief was preparing to step out the door, and disappear from sight.

Police officials believe the robber left the immediate bank area on foot, but may have fled the scene in a waiting car beyond sight of bank employees.

Roadblocks were quickly set up ringing the bank area, but no suspects were arrested.

A police tracking dog from

Vancouver, and RCMP dog Flash, from Cloverdale, were unable to flush any fugitive from Dominion Bridge, just down the highway from the bank. A stolen car, possibly used as a getaway vehicle, was found near the plant, but no further tracks were found in its vicinity.

The same bank was robbed in January of 1964, when the haul was \$4,000. Two robbers locked themselves into the bank and waited for the staff to arrive in the morning, before herding manager Ed Fretz and his small staff into a corner, at gunpoint.

Two Prince George men were later arrested, tried and convicted of the robbery, and were sentenced to 10 years and 10 strokes of the lash.

There have been no bank stick-ups in Burnaby in the 18 intervening months.

Teller Frances Murphy, 19, an employee of thirteen months, was still in school when the last holdup took place.

She described the man as five-

foot eight, 150 pounds, dark hair, ruddy and pimply in complexion. He was wearing a panama straw hat, with broad ribbon band, and dark sunglasses. He wore a dark suit, white shirt, and worn dark tie.

He was alone in the bank during the robbery, as there were no other customers, and the manager was out to late lunch. The four female staff members were left to face the bandit alone, but only Miss Murphy was involved in the drama until the gunman turned to leave the bank. His quiet instructions were never heard by the full staff, and Miss Murphy had to inform the staff of the holdup when the man had left.

Police officials expect no dramatic break in the crime within the next day or so, but are convinced that one of the many leads will reveal the identity of the gunman.

Investigation is proceeding under the direction of Corporal L.A. Gould, of the Burnaby Criminal Investigation Bureau.



FRANCES MURPHY... "What I

1,365 More Students On September 7

More than 13000 additional students are expected to enrol in Burnaby schools when classes start September 7.

Enrolments by the last day of September is expected to rise to about 25,840 students; 15,931 of them in grades 1 to 7, and 9,909 in grades 8 to 13.

Registrations last year showed a total of 24,475 on September 7.

Of these, 15,336 were in elementary schools, 5,497 in junior secondary grades, 3,345 in senior secondary, 115 in occupational courses, and 182 were enrolled in special classes.

Number of Grade 13 students is expected to drop this year, resulting from a number of eligible students electing to attend Simon Fraser University instead. Last year 280 high school graduates registered for senior matriculation courses.

Core Apartment Zone Plan Killed By Council

Council virtually killed Municipal Planning Director, Tony Parr's concept of "core locations" for high rise apartments in Burnaby, in a wide-ranging discussion at a carryover adjourned council meeting Monday night.

Councillor Doug Drummond launched the slashing attack on Parr's concept, adopted from a report by the Lower Mainland Regional Planning Board. It suggested that high-rise apartments (those over three storeys) be limited to small areas around Hastings, Brentwood, Simpson's-Sears, Middlegate and Edmonds, and implied that nothing above three full floors, plus a penthouse, be permitted.

(CONTINUED ON PAGE 2)

Burnaby Tech Student Killed In U.S. Crash

Two close college friends were separated by death last Saturday morning, when Daniel Davidson, a 21-year-old Nelson student stay-

ing in Burnaby, died at Skagit Valley Hospital in Mt. Vernon, Washington, following a Friday night single-car crash on the Seattle highway.

Robert Bidwell, 21, of 4248 Kitchener Street, Burnaby, is recovering in Skagit Valley Hospital from severe spinal injuries, suffered when the three occupants

Friday morning started no differently than any other for pretty 19-year-old bank teller Frances Murphy.

She caught her usual ride to the Toronto-Dominion Branch at Willingdon and Loughheed, and arrived around 9:00.

Friday, as Frances and other bank employees know only too well, is the busiest day of the

financial week, and auburn Frances quickly settled down to the normal early morning business - opening the mail and clearing the cheques issued against the branch and accepted by other banks the previous day.

Three of the bank's time employees are tellers on Fridays wickets at the small open all day.

(CONTINUED)

SFU Should Build Astrodome-MacSorley

Burnaby's astrodome should be built as a stadium for Fraser University, by federal and provincial funds, Charles MacSorley suggested this week.

Both Reeve Alan Emmert, tentatively agreeing, and Prof. Bennett, more reservedly optimistic, have given sympathy to the new proposal. The Examiner was told MacSorley, long-time Reeve and Municipal Council member.

Burnaby, taking the first step, should donate the Kensington and Laurel site, adjacent to the Brown Memorial Swimming Pool and the new participation ice arena, to the University Endowment Fund, the Social Credit standard-bearer explained.

Then the university administration would be charged with the responsibility of financing the estimated \$15 million dome project. The federal government, under such an arrangement, "would have no excuse for not contributing", he added.

With Canadian football and possibly pro hockey tied down to (CONTINUED ON PAGE 6)



MILA CHARLES M... donate Burn

Other SFU First Instant Tradition

of Scotland's Lord Lyon King of Arms Simon Fraser managed another first - instant tradition. In February, from the sketch of Lord Lyon himself, SFU's board of governors approved the earlier design, but the chief herald found a slight (CONTINUED ON PAGE 6)

t. dixon

loved. What a weight of guilt we parents must carry because of the warped attitudes we have created in the minds and lives of those dependent upon us!

youngsters. Read the blood-boiling accounts of how some babysitters (often adults) harass, badger and maltreat their charges, thus causing untold mental and personality warp and damage.

Who is to blame? Everyone who should know better, but who is too unconcerned and selfish to take an

If mother and dad would sooner have their fun in the beer parlour while their kids suffocate or freeze in the family auto; and if mother and dad would rather be off with their pals than learn to be pals to their own children; and if they would sooner have to cheques coming in each pay-day, at the risk of some

View Area Upped

Spectator facilities at Clifton Brown Memorial Swimming Pool will be improved, when Bley Construction Co. executes its \$13,582 contract awarded by the parks and Recreation Commission.

Plans call for revisions in both men's and women's change room floor plans, relocation of guard

EAGLE FOR FOR



PHOTOGRAPHIC EVIDENCE of fatal accident at Banff, Alberta two weeks ago shows that the collision was a rear-end, not a head-on collision as originally believed.

Burnaby housewife, Mrs. Beverly Platt, 5060 Venables Street, died in the flames that followed the impact.

- Don Lorenzetti, Banff Crag & Canyon

Gone to Lunch

Third Holdup Lucky For TD Bank Manager

Friday's \$2,800 bank holdup was the third for Ed Protz, manager of the Toronto Dominion Bank at Lougheed and Willingdon, B.C. He was wowed into a dark corner at gunpoint eighteen months ago, along with his staff, when a pair of armed robbers locked themselves into the bank after breaking in, then helped themselves to \$4,000 of the merchandise before staff members reached the premises, and held them at gunpoint before making good their escape. The bank had just been established two-and-a-half years before the first robbery, in January of 1964.

Protz was also involved in a 1958 holdup of the Kingsway and Joyce branch of his bank, when police smoked out the stickup men from a house across the street hours later, and recovered all the money.

This time, however, Protz wasn't even on the premises. Out to lunch from just after 2:00 p.m., Protz arrived back at the bank minutes before 3:00 -- as did dozens of Burnaby Mommites.

After hearing the account of the holdup, he lavished praise on the staff.

Teller Frances Murphy, faced with the gunman alone for minutes, "was very good about it", "She took it in good stride", "The whole staff behaved very well," he added.

"You expect these things after a while" in the banking field, Protz allowed.

"We're not interested in risking people's lives for money", he explained.

"I'm happy to say the least."

Kindergarten

A new Kindergarten will be opening on Capitol Hill this fall. Playland Kindergarten, held in Capitol Hill Anglican Church, at Hythe Avenue and Hastings Street, will open its doors early in September. Sessions will be held daily Monday to Thursday. Parents interested may make application for the service, licensed by the provincial welfare department to accommodate twenty young children.

Hale
ASSURANCE

Ind...
Com...
Cus...
Em...
BURNABY
490
H

High-Rise Apartment Plan Killed

(CONTINUED FROM PAGE 1)

house, should be allowed throughout the rest of the municipality.

"It would be foolish to allow the lowest type of apartment -- garden apartments -- in the Edmonds to Patterson strip along Kingsway," he told Parr.

"We should attempt now to plan for the future, for buildings for 50 to 100 years from now."

"High rise will gradually develop the whole area".

Councillor Andy Blair agreed, with reservations.

"I feel that 180 feet (the maximum for high-rise) is too high for much of the municipality, "But I have spoken before against garden apartments", He called for new legislation permitting 6 - 10 storey buildings, regulated as to height by the Planning Department.

Councillor Russell Hicks took the opposite viewpoint, in support of the Planning Department.

"If Drummond is not satisfied with the Lower Mainland Regional Planning Board report, or with our Planning Department, he should read planning books at the library," he thundered.

"Garden apartment development is needed -- there is a need for it in our society".

"The core concept is well founded in the first place. It isn't new -- we've been following it for years".

Here Councillor Emmet Cafferky spoke his piece.

"What Councillor Hicks has talked about is not core living -- it's communal living!" he roared.

"The core concept is for guidance only, not a cardinal rule".

"No other area could have high rise, if the Planner's report is adopted", he reminded councillors.

"What is incompatible about

high rise along Kingsway and Hastings?" he demanded.

Councillor Joe Corbale agreed with Cafferky.

"In the future, Kingsway will be one major core, and so will Hastings".

"In 50 years we will have many poor buildings if we allow garden apartments all along Kingsway and Hastings. Some garden apartments in Burnaby were hastily thrown together".

Councillor Jim Dally told Council he had originally favored the core concept because he thought that high rise should primarily be limited to Hastings

and Kingsway. "But I do feel that it could be located elsewhere".

After another round of cross-fire, Council agreed to wait for Parr's department to frame new regulations, permitting medium rise apartments, before considering a number of the present applications for high rise.

After another round of cross-fire, Council agreed to wait for Parr's department to frame new regulations, permitting medium rise apartments, before considering a number of the present applications for high rise.

Burnaby Citizens
MAY I HELP YOU?
JIM MASON
-NPA Reeve Candidate
-298-7564 (res.)
-299-9233 (off.)

Your best friend financially

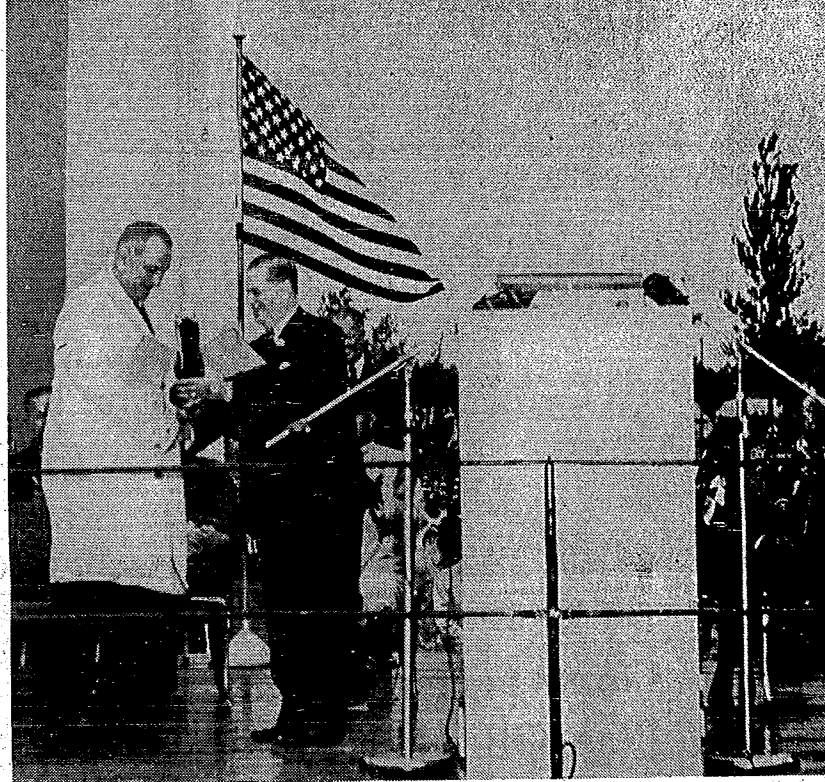
John J. Christian
6327 Buchanan Street
North Burnaby
526-3725
CY9-2472



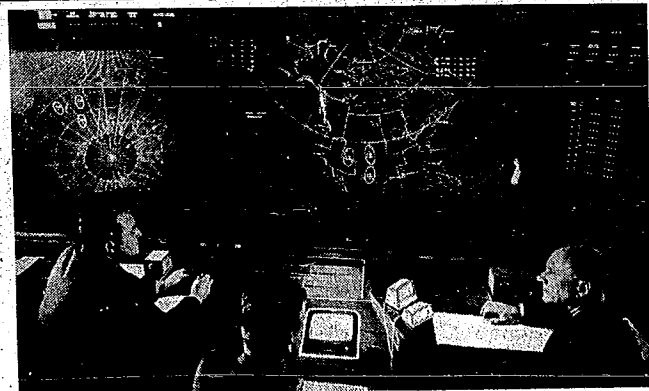
Investors SYNDICATE LIMITED

Distributors for:

- Investors Mutual of Canada Ltd.
- Investors Growth Fund of Canada Ltd.
- Investors International Mutual Fund Ltd.



ANNOUNCING:
ANOTHER OPPORTUNITY
TO BUILD YOUR SAVINGS
ON BRITISH COLUMBIA
EXCITING DEVELOPMENT



Spotlight on Defence

"Official NORAD photo."



British Columbia's great years continue. The Portage Mountain Dam rises in the bed of the mighty Peace River. Work presses forward on the Duncan, Arrow, and Mica projects on the Columbia. Month after month our economic development reaches new peaks, as we build a truly dynamic society in British Columbia. Take this opportunity to build your savings on your Province's development. Read in these four points why bonds in this new issue are an exceptional

Sept...
Premi...
B. Pe...
B.C. ...
forma

THE ISSUE...
by an indiv...
limited to \$2...
DENOMINAT...
are available...
in denomin...
\$1,000, \$5,00...
REGISTRATI...
\$5,000, \$10,0...
fully regist...
INTEREST...
3% per annu...