

Sod Turned On Site Of 'Elegant Lady' Mall



NICHOLAS SAVCHENKO, roads and sewer design engineer for Burnaby, has completed an intensive short course on modern road and street design at the Portland Cement Association headquarters in Chicago. Savchenko studied the use of soil-cement for road base construction and modern methods of design for concrete slabs, curbs, joints and drainage. He also heard discussions on the economics of road construction, the slip-form paver, traffic analysis and the use of computers for design analysis. Lyle Stappels, contract administration engineer for the Burnaby engineering department, attended a similar course last year.



A CEREMONIAL shovel and a ceremonial shove from Reeve Alan Emmott of Burnaby broke land for the \$18 million Lougheed Mall last week. Jack Aceman, left, leads the group of promoters developing the project. Other faces in the background belong to managers of department stores who have promised to take space in the mall, and two bulldozer operators who obviously thought that moving earth with tiny shovels was for the birds.

Breaking ground with a powerful bulldozer and one small ceremonial shovel, Reeve Alan Emmott Friday officially launched development at North Rd. and Lougheed of the \$12 million Lougheed Mall.

With citizens clamoring for services, Reeve Emmott said the mall will provide three distinct benefits for Burnaby - it will give additional shopping service, offer employment and be a source of "substantial taxation" for the municipality.

Developers of the 40-acre site, from which some homes were cleared, are two Vancouver men, Jack Aceman and S.H. Rosen, and their Winnipeg partner M.F. Nathanson.

The two-level shopping centre, air conditioned throughout, will also have two cinemas, one to seat 1,500 and showing full-length movies, and another 400-seat capacity theatre.

Initial development comprises over 400,000 square feet of which Hudson's Bay will take

120,000 and Canada Safeway 30,000 square feet.

Reeve Emmott, Councillor Emmett Cafferky, municipal manager Harold Balfour and planner Tony Parr represented the municipality at the sod-turning ceremonies. N.H. Abramson, manager for B.C. and Alberta, represented The Bay, W.J. Kraft, chairman of the board of Canada Safeway and Aceman also attended the launching function.

The Bay and Safeway's major tenants in the developed property, will be joined by other Canadian specialty and chain stores on the site, according to the architects, Dirassar, James and Jorgenson.

The architect's say there'll be parking space for 2,000 cars and though the first (\$12 million) stage of development occupies 40 acres, land has been bought for future expansion.

The basic design concept, according to the architect's, is that the centre will be "an ele-

gant lady". Curved pale brick walls and "intimate wooden canopies" will be used and extensive landscaping is being planned.

It is expected the development will be open for business in September, 1967.

The interior spaces of the centre include the two-storey mall with a glazed vaulted ceiling as well as a two-storey square in front of the department store. Another focal point will be a two-storey recreation and catering mall which will be decorated as a European street scene with sidewalk cafes, year-round ice skating and a tot's playland.

Tenders for the development will be called next April.

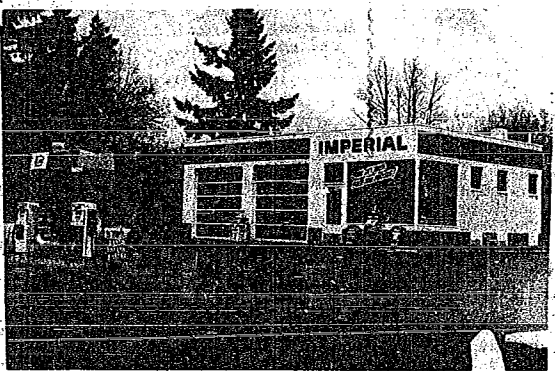
Alexander Cartage and Contracting Co. Ltd., is the excavation and sitework contractor.

The mall, though on Burnaby's eastern border, will be handy for shoppers in New Westminster, Port Moody and Coquitlam.

GRAND OPENING



THE WILLINGDON - MOSCROP AREAS NEWEST SERVICE STATION



HAROLD HUNTER'S MOSCROP



HAROLD HUNTER'S Opening Specials!

DEC. 4 1965

10% DISCOUNT

ON ALL ACCESSORIES

FREE GIFTS FOR EVERYONE !!

ATLAS Guaranteed By IMPERIAL

Famous ATLAS "MILEPAK" BATTERY



-24 MO GUARANTEE
-ESSOMATIC CREDIT UP TO ONE YEAR TO PAY

12 VOLT - REGULAR RETAIL 18.99

Dealer Price With Trade..... 13.55

6 VOLT - REGULAR RETAIL 14.50